

UK PRODUCT GUIDE



Contents

Contents

About us - Morgana History:	Page 3
Bookletmakers (Entry level):	Page 4 - 5
Bookletmakers:	Page 6 - 9
Creasers:	Page 10 - 13
Folders:	Page 13 - 15
Creaser/Folders:	Page 16 - 17
Cutters/Slitters:	Page 18 - 19
PUR Binders:	Page 20 - 21
Numbering Machines / Jogger:	Page 22
Feeders / Collators:	Page 23
Paper Cutters & Guillotines:	Page 24 - 27
Laminators:	Page 28 - 29
Paper drilling / Stitchers:	Page 30
Punch and wire binding:	Page 31
Thermal Binding	Page 32
Flatbed Cutters:	Page 33
Shredders:	Page 34 - 35
Mail Inserter Systems:	Page 36
Notes:	Page 37 - 39



This product guide is intended to give you an overview and outline specifications of the products we manufacture and sell. Full detailed specification sheets are available on our website, where you can also see video demonstrations of most of the machines.

All specifications are dependent on application, type of stock, temperature, RH and print engine used. E & OE.

Morgana - About us

Morgana Systems has grown to become the UK's leading manufacturer of off-line print finishing systems and equipment. Morgana is now recognised as a leading innovator in the development of finishing systems designed specifically to meet the needs of the rapidly growing digital print market.

The UK headquarters, based in Milton Keynes, is a 50,000 sq. ft. facility housing equipment design, manufacturing, electronics assembly, spare parts distribution and the UK Sales and Service organisation. A purpose built showroom and training facility is used on a daily basis by customers from all over the UK and Europe to test and evaluate machines.

Over 80% of the products manufactured in Milton Keynes are exported and sold through our global distribution network. Morgana has developed a strong presence in all key markets throughout Europe and Africa and continues to grow with its partners and through joint ventures in the USA and Australasia. Focus has now increased on rapidly developing markets such as China, India and South America.

Key products such as the Morgana DigiFold Pro and AutoCreaser Pro continue to set the industry standard in this sector. Build quality, accuracy, ease of use and productivity are all key to the design and manufacture of our products.



Morgana is a preferred finishing partner of all the leading manufacturers of digital print engines both here in the UK and around the world.

In 2013 Morgana Systems was acquired by The Plockmatic Group, strengthening its position as an efficient and flexible solution provider. Through this partnership Morgana now offer a much extended range of booklet making systems.

Plockmatic are a leading developer of in-line finishing solutions for the major print engine manufacturers. The combined product offering of both companies give an unrivalled range of finishing options to the digital print sector.

Bookletmakers (Entry level)

BM60 Bookletmaker

The BM60 bookletmaker from Morgana, is a compact and easy-to-use machine for hand feeding.

This machine is able to saddle staple and fold booklets of up to 22 sheets of 80gsm paper, giving up to 88 page booklets. Side and corner stapled documents can also be produced with this versatile machine. Sheets ranging from 60gsm to 250gsm and from SRA3 to A5 can be run to produce A6 to A4 sized booklets. Booklets with loop stapling can also be produced, by simply changing the stapler head.

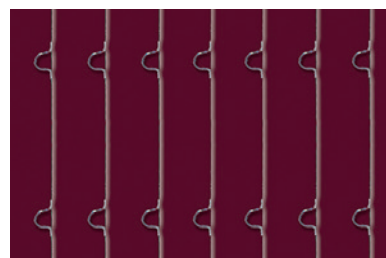
Various functions are engaged or disengaged from the operator panel; manual or automatic mode, stapling off for folding only or folding off for stapling only.

Up to 1800 booklets can be produced per hour on this well proven and sturdy product machine. The BM60 is a market leader for the hand fed bookletmaker segment.

- 1800 booklets per hour
- Saddle staple and fold
- Up to 88 page booklets on 80gsm stock
- Side and corner staple
- Media weight : 60gsm - 250gsm
- Booklet sizes from A4 to A6



BM60 + SQF104



Optional loop staple feature

Key Product Features BM60

Capacity:	22 sheets of 80 gsm
Speed:	Up to 1800 sets/hour
Paper size, max:	338 x 458 mm
Paper size, min:	138 x 210 mm
Paper weight, max:	250 gsm
Paper weight, min:	60 gsm
Stapler modes:	Saddle, edge and corner stapling
Stapler heads:	2
Staples:	210 Chisel pointed
Error detection:	Low staple and jam
BM60 : Dimensions:	H1230x W960 x D500 mm including base and belt stacker
BM60 : Weight:	55 kg

Options

Base to BM60/61

Belt stacker to BM60/61

Delivery tray to BM60/61

Morgana Squarefold 104 Unit

Stand for Morgana Squarefold 104



BM60 + Base cabinet + Belt Stacker

Bookletmakers (Entry level)

BM61 Bookletmaker

The machine comes in two formats; the BM60 is for hand feeding only, whilst the BM61 is equipped with a side jogging unit and can be connected to the AC510 collator to give more automation to the booklet making process.

These versatile machines are able to saddle staple and fold up to 22 sheets of paper and can also be used to side staple or corner staple documents.

The BM61 can take sheets from 200 x 270mm to 305 x 440mm. Various functions can be engaged or disengaged from the operator panel, manual or automatic mode, stapling off for folding only or folding off for stapling only. An additional beltstacker can be fitted to the delivery for longer runs of booklets.

Up to 1800 booklets per hour can be produced from this well proven and sturdy machine. The BM60/61 is a market leader with this entry level product.

- 1800 booklets per hour
- Saddle staple and fold
- Up to 88 page booklets on 80gsm stock
- Side and corner staple
- Media weight : 60gsm - 250gsm

Options

Base to BM60/61

Belt stacker to BM60/61

Delivery tray to BM60/61

Morgana Squarefold 104 Unit (as shown below)

Stand for Morgana Squarefold 104



Key Product Features BM61

Capacity:	22 sheets of 80 gsm
Speed:	Up to 1800 sets/hour
Paper size, max:	305 x 440 mm
Paper size, min:	200 x 270 mm
Paper weight, max:	250 gsm
Paper weight, min:	60 gsm
Stapler modes:	Saddle, edge and corner stapling
Stapler heads:	2
Staples:	210 Chisel pointed
Error detection:	Low staple and jam
BM61 : Dimensions:	H1280x W880 x D500 mm including base and belt stacker
BM61 : Weight:	58 kg



BM61 + C510 + SQF104

Squarefold 104

The Morgana Squarefold 104 adds increased value to your booklets by giving them a professional, perfect bound look with the security of a stapled finish. This revolutionary device can be used as a hand fed unit, attached to the BM60/61 booklet maker or linked to a wide range of traditional and digital finishing devices.

Added advantages of square folded books are increased packaging capacity and the ability to print onto the spine of thicker booklets. Booklets from landscape A4 to A6 size can be produced on this versatile, easy-to-use machine.



Morgana Squarefold 104

Bookletmakers

BM350/500 Bookletmaker

The Morgana BM350/500 is a modular booklet making solution for centralised reproduction departments and commercial print providers, large and small. Customers can choose from a range of cost-effective options to support their application requirements. The system is packed with a host of unique technologies that deliver finished books with quality to match today's printing systems.

Customers are demanding more media versatility from digital print. The Morgana BM350/500 is designed to work with today's coated, uncoated and textured paper stocks.

Key Features

- Morgana BM500 - 200 page (50 sheet) hand fed booklet maker
- Morgana BM350 - 140 page (35 sheet) hand fed booklet maker
- Intuitive user interface
- Patented folding mechanism provides a sharp and professional finish
- Book thickness measured automatically to the fold rollers
- Heavy duty stapling heads with 5000 staple cartridge
- Lead edge trimmer with multi-cut technology to remove the shingle and give a clean finish
- Optional Squarefold unit to give square edged books with flatter finish.

System ACF350/500

(Shown here with ACF510 Feeder)

The Morgana BM350/500 can be equipped with one of our automatic feeders to give higher productivity and long uninterrupted runs of booklets. The ACF510 can be used to feed individual sections, pre-collated sets or indeed a combination of both.



System ACF350/500 shown here with ACF510 feeder

BM350/500

Standard paper sizes:	A4, A3, B4, SRA4, SRA3
	Custom size possible
Paper size, min:	Width 206 mm / Length 275 mm
Paper size, max:	Width 320 mm / Length 457.2 mm
Paper weight:	uncoated (Min) 64 gsm
	coated (Min) 105 gsm
Paper weight, max:	300 gsm
Set size (stapled folding):	2-50 Sheets BM500
	2-35 Sheets BM350 (80 gsm)
Set size (non stapled folding):	1-2 sheets
Off-line use:	Yes
Power source:	100-230V 50-60Hz
Power consumption:	250W
Noise emission:	62dB

BM350/500 + Trimmer



ACF510 Bin Feeder

No. of bins:	10
Bin capacity:	28 mm
Sheet size, max:	320 x 457 mm
Sheet size, min:	120 x 210 mm
Paper weight, max:	250 gsm
Paper weight, min:	50 gsm
Collating speed:	Up to 4000 sets/hour
Centre registration:	Yes
Air separation:	Yes
Error detection:	Double feed, misfeed, empty bin, paper jam and stacker full
Receiving tray:	Offset/straight stacking
Dimensions incl. base:	H x W x D 1925 x 600 x 700 mm
Weight:	108 kg

System AF350/500 VF350/500 Bookletmaker

The NEW System AF350/500 or VF350/500 bookletmaker has a full colour user interface and comes with a Dual Bin AF (Air assist) or VF (Vacuum fed) Feeder. The optional Squarefold and Face Trimmer modules make this solution the perfect fit for small and large CRD departments and commercial printers. The air assisted AF602 or the vacuum VF602 dual bin feeders are designed for pre-collated sets. Each bin can be loaded separately on the run to give continuous production.

Trimmer Specification (Optional)

Minimum trimming:	1 mm*
Maximum trimming:	16 mm* per cut
Power source:	From BM350/500
Standard paper sizes:	Same as BM350/500

*The Trimmer supports a “multi-cut” operation. This allows customers to create a 100 mm long booklet.

Squarefold Specification (Optional)

Paper Size max:	Same as BM350/500
Set size (stapled folding):	From BM350/500
Power source:	From BM350/500

System 350/500 Options

CR500 Creasing Unit
Optical Reader: OMR, Barcode & 2D
CST Creasing and Side Trimming Unit
Beltstacker

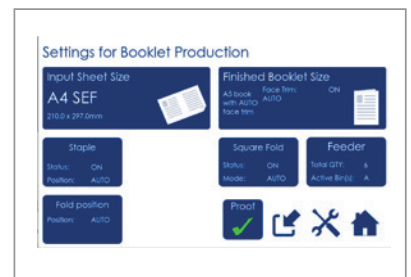
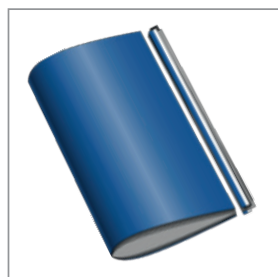
Features of the modular systems

Bookletmaker - the simplest configuration includes the Bookletmaker and output tray to provide a simple solution to producing hand fed sets, stapling, folding and stacking.

Face Trimmer - the addition of the trimmer removes the shingled effect on the face of the folded document and provides a clean document edge.

Automatic feeding - The BM350 and BM500 can be equipped with any one of our automatic feeders.

Squarefold - this unit adds a square folded spine for a professional, perfect bound look to the finished book.



AF602/VF602 Dual Bin Feeders

No. of bins:	2
Bin capacity:	2 x 270 mm
Sheet size, max:	350 x 660 mm
Sheet size, min:	120 x 210 mm
Paper weight, max:	300 gsm
Paper weight, min:	60 gsm
Centre registration:	Yes
Air separation:	Yes
Error detection:	Double feed, misfeed, empty bin, paper jam
Dimensions incl. base:	H x W x D 1260 x 1017 x 700 mm
Weight:	250 kg
Connect-able devices:	BM2000/BM2000S, CST2000, BM350/500, CR2000, CST500, CR500



System AF350/AF5000 with Trimmer and Squarefold

Bookletmakers

Morgana System 2000/2000S Bookletmakers

In today's demanding printing environment, a flexible solution to booklet production is a must for all printers. Often there is a need to produce booklets from both digital presses and litho machines, or where covers have been coated or laminated.

The required print volume and quality will determine the appropriate printing method and, in many cases, the finished booklet may have been printed on different print engines and thus needs to be merged. Also, prints from digital printers come pre-collated, whereas from an offset press they require sorting or collating.

All this is a challenge for the finishing devices in order to keep a good workflow and maintain productivity.

- Air assist feeder unit
- Large LCD programmable display
- Up to 4000 sets per hour in collate mode
- Feed pre-collated sets from digital devices
- Convenient loading stapling head (BM2000)
- 30 x 80gsm sheets, booklets up to 120 pages
- Up to 3000 books per hour
- High quality front edge trimmer unit

Options System 2000 and 2000S

- CST2000 Creaser & side slit unit
- SQF2000 Squarefold unit for perfect edge booklets
- Beltstacker 4000-1 unit for high volume production
- Morgana FTR 2000 Trimmer

Morgana System AF2000/AF2000S Bookletmakers

The System AF2000S, with its high capacity dual bin feeder offers a flexible solution for a wide range of booklet types and sizes. The system is fed by the AF602 air-assisted feeder which has a loading capacity of up to 540 mm, giving long uninterrupted production runs. Pre-collated sets can be placed into both bins for longer runs, or covers can be placed into one of the bins when they need to be merged with collated sets.

The booklet making section can be supplied with heavy duty stitching heads for up to 50,000 stitches from one wire spool, or with stapling heads which can be loaded with 5000 staple cassettes. A fore-edge trimmer comes as standard to give a clean finish to the booklets.

An optional Morgana Squarefold can be added to the system; this unit adds a square folded spine for a professional, perfect bound look to the finished book.

For full bleed production, the Morgana CST crease and side trim unit can be added. Trim edges can be removed from the sheets, eliminating the need to trim the booklets prior to production in an offline guillotine.

BM 2000/2000S Bookletmaker

Capacity:	30 sheets of 80 gsm / 32 sheets on 2000s
Speed:	Up to 3000 sets/hour
Sheet size, max:	320 x 470 mm
Sheet size, min:	120 x 210 mm
Paper weight, max:	300 gsm
Paper weight, min:	60 gsm
Stapling modes:	Saddle, edge and corner stapling
Stapling heads:	2 (BM2000) 5,000 per cartridge
Stitching heads:	2 (BM2000S) 50,000 per roll spool
Job saving:	Yes, 10 jobs
Dimensions H x W x D:	1135 x 1520 x 680 mm incl. base and belt stacker
Weight:	161 kg

System 2000S : with Squarefold + Beltstacker



Options System AF2000/AF2000S

- CST2000 Creaser & side slit unit
- SQF2000 Squarefold unit for flat spine booklets
- Beltstacker 4000-1 unit for high volume production
- Morgana FTR 2000 Trimmer



System AF2000S shown with optional CST2000 and Squarefold unit

AC510 Feeder/Collator

No. of bins:	10
Bin capacity:	28 mm
Sheet size, min:	120 x 210mm
Sheet size, max:	320 x 457 mm
Paper weight, min:	50 gsm
Paper weight, max:	250 gsm
Collating speed:	Up to 4000 sets/hour
Feed speed:	Up to 10,000 sheets/hour (CF510/ACF510)
Receiving tray:	Offset / straight stacking
Dimensions incl. base:	H x W x D 1925 x 800 x 1200 mm
Weight:	150kg

AF602/VF602 Dual Feeder

No. of bins:	2
Bin capacity:	2 x 270 mm
Sheet size, max:	350 x 660 mm
Sheet size, min:	120 x 210 mm
Paper weight, max:	300 gsm
Paper weight, min:	60 gsm
Centre registration:	Yes
Air separation:	Yes
Error detection:	Double feed, misfeed, empty bin, paper jam
Dimensions incl. base:	AF: H x W x D 1600 x 800 x 1200 mm
Dimensions incl. base:	VF: H x W x D 1450 x 800 x 1200 mm
Weight:	250 kg
Connect-able devices:	BM2000/BM2000S, CST2000
	BM350/500, CR2000
	CST500, CR500
Weight:	310 kg

FTR 2000 Trimmer

Capacity:	30 sheets of 80 gsm / 32 sheets on 2000s
booklet length, min:	120 mm
Booklet length, max:	220 mm
Booklet length, by pass:	min 105 mm
Booklet length, by pass:	max 235 mm
Booklet width, min:	120 mm
Booklet width, max:	320 mm
Speed:	Up to 2400 sets/hour
Trim length:	Up to 15 mm
Dimensions incl. base:	H x W x D 1100 x 350 x 595 mm
Weight:	83 kg

CST 2000 Creaser Side Trimmer

Bleed trim:	Max 30 mm, min 5 mm each side
Creaser tool:	fine < 120 gsm
Creaser tool:	coarse > 120 gsm
Sheet size:	min 120 x 210 / max 320 x 470 mm
Paper weight, max:	min 60 gsm / max 300 gsm
Dimensions:	H x W x D 1250 x 820 x 855 mm
Weight:	210 kg

SQF 2000 Squarefold

Capacity:	30 sheets of 80 gsm / 32 sheets on 2000s
Booklet length:	min105 / max 228 mm
Booklet width, max:	min 120 / max 320 mm
Speed:	Up to 1800 sets/hour
Dimensions incl. base:	H x W x D 1100 x 350 x 595 mm
Weight:	60 kg



Samples of books both with and without squarefold

Creasers

DocuCreaser 35/52

35cm and 52cm hand creaser designed for small volume applications, the Morgana DocuCreaser is a hand operated machine, which has adjustable stops for multi creasing down the sheet.

Like the fully automated Morgana AutoCreaser, the DocuCreaser has been designed to overcome the cracking problems encountered when trying to fold material from digital or litho based print engines. The new digital machines often use toner which will crack on the material, particularly if the grain is running in the wrong direction. The Morgana DocuCreaser is the perfect low-cost solution to these problems.

ElectroCreaser 36/52

Quality blade and matrix creasing, with a price and performance geared to the needs of the smaller printer or inplant.

The semi-automatic ElectroCreaser is the ideal unit for a user who needs something faster than a manual creaser, (such as the Morgana DocuCreaser) but cannot justify the cost of a fully automated machine such the AutoCreaser.

It provides 2 creasing widths as standard, - 1.6mm and 1.2mm - with the ability to change from one to another in seconds. It also has a special 'Super Speed' stop system, which greatly simplifies jobs that call for multiple creases.

The creasing matrix is electronically activated by a foot switch for increased accuracy and productivity.

DigiCreaser

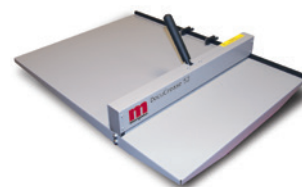
Fully automatic after feeding, the Morgana DigiCreaser is a fast, versatile creaser that can be supplied as a bench-top model or with an optional base unit.

Easy to use, with a head-up display to prompt the operator, the DigiCreaser uses blade and matrix creasing for optimum quality and has counting and perfin as standard features. It can store nine programmes for repeat work.



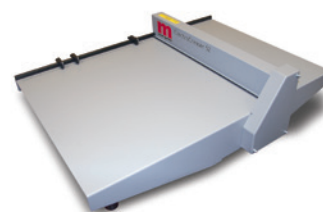
Key Product Features

Dimensions:	35 - L 600mm x W 385mm x H 120mm
Dimensions:	52 - L 750mm x W 555mm x H 120mm
Electrical:	n/a
Sheet size:	35 - 360mm x 350mm
Sheet size:	52 - 520mm x 520mm
Sheet weight:	Up to 0.4mm (approx 400gsm) including laminated material



Key Product Features

Speed:	n/a
Dimensions:	36 - L 700mm x W 480mm x H 210mm
Dimensions:	52 - L 780mm x W 640mm x H 220mm
Electrical:	240v 50/60hz
Sheet size:	36 - 435mm x 365mm
Sheet size:	52 - 520mm x 520mm
Sheet weight:	Up to 0.4mm (approx 400gsm) including laminated material



Key Product Features

Speed:	4000 sheets per hour
Dimensions:	L 870mm x W 570mm x H 570/1070mm
Electrical:	240v 50/60hz
Sheet size:	630mm x 330mm
Sheet weight:	Up to 0.4mm (approx 400gsm) including laminated material

Options

Stop Perf blade
Rotary Perf

AutoCreaser Pro 33

The AutoCreaser Pro 33 provides the complete solution to the problem of cracking that occurs when folding digitally printed output. It is equally effective in dealing with conventionally printed card, laminates or cross-grained stock.

Traditional rotary scoring machines use circular blades that are in constant motion as the stock passes through them. This creates a ploughing action that actually cuts through the top fibres of the paper or card in order to create a score. Inevitably this weakens the paper and encourages cracking. In contrast, the Morgana AutoCreaser Pro 33 employs a unique creasing rule and matrix that eliminates tearing and, therefore, cracking.

- 7" HD SmartScreen touch screen
- Accurate to 0.1mm
- Fully automatic
- Up to 16 creases per sheet
- Takes stock up to 0.4mm (approx 400 gsm)*
- Rule and matrix guaranteed for life
- 8500 sheets per hour
- Adjustable crease depth & square
- Perfing as standard
- Optional side/stop perfing
- Crease without cracking

Key Product Features

Speed:	8500 sheets per hour
Sheet size, max:	330 x 700mm (900mm with optional extension table)
Sheet weight:	Up to 0.35mm (approx 300gsm) including laminated material
Dimensions:	L 1450mm x W 522mm x H 1224mm
Electrical:	240v 50/60hz



AutoCreaser Pro 50

The AutoCreaser Pro 50 is a fully automatic model, with the intuitive Morgana SmartScreen touch screen control. Using the screen is simplicity itself - simply key in the sheet length (popular sizes are pre-set), touch the fold type for the finished product (letter, gate etc.) and press the start button. The AutoCreaser Pro will automatically calculate where the creases need to be and set them accordingly.

- 7" HD SmartScreen touch screen
- Accurate to 0.1mm
- Fully automatic
- Up to 16 creases per sheet
- Takes stock up to 0.4mm (approx 400 gsm)*
- Rule and matrix guaranteed for life
- 8500 sheets per hour
- Adjustable crease depth & square
- Perfing as standard
- Optional side/stop perfing
- Crease without cracking

Key Product Features

Speed:	8500 sheets per hour
Sheet size, max:	500 x 700mm (900mm with optional extension table)
Sheet weight:	Up to 0.35mm (approx 300gsm) including laminated material
Dimensions:	L 1500mm x W 682mm x H 1224mm
Electrical:	240v 50/60hz



Creasers

The AutoCreaser Pro 385

The AutoCreaser Pro 385 provides the complete solution to the problem of cracking that occurs when folding digitally printed output. It is equally effective in dealing with conventionally printed card, laminates or cross-grained stock.

The AutoCreaser Pro 385 is equipped with the very latest in technology to enable automatic set up of jobs, including setting of all feeder functions, by selecting just a few simple parameters on the Morgana SmartScreen touch screen control. The new deep pile feeder allows stacking of up to 450mm of paper to enable longer runs and is equipped with a SmartStep table drop for fast loading of shorter run jobs.

Paper feeding is controlled by a new vacuum top feeding drum that can automatically change between a wide range of paper types and thickness with little operator intervention.

An additional feature of the The AutoCreaser Pro 385 is the dual blade & matrix system. This allows operators to select “up” & “down” crease profiles in one pass, particularly useful when producing covers for perfect binding, or to carry two different crease widths to quickly and easily change from heavy to lightweight stock, once again, by simple selection from the SmartScreen. All Morgana crease and matrix sets are guaranteed for the life of the machine.

The AutoCreaser Pro 385 is controlled entirely by the latest version of the Morgana SmartScreen touchscreen control. The sheet size is entered, along with finish fold type - all other functions are then set automatically by the machine, including the air separation, side guide position, crease positions and table height.

For non-standard sheet sizes or fold types, an alpha-numeric memory allows an unlimited number of jobs to be stored and named as you choose, making job recall much easier using your own job name and numbers.

Up to 8500 A4 sheets per hour can be produced with the crease position accurate to +/- 0,1mm, with a maximum sheet size of 385 x 700mm. Up to 16 creases per sheet can be placed as close as 1mm apart.

Perforation comes as standard on the AutoCreaser Pro range with a wide variety of wheels available to suit all.

An optional side/stop perforating unit can be added for more complex jobs.

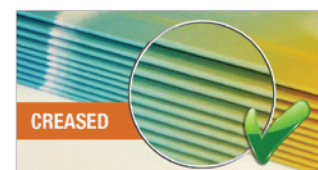
- Crease without cracking
- Intuitive SmartScreen touch screen control
- Takes stock up to 0.4mm (approx 400gsm)
- Maximum sheet size 385mm x 700mm
- Suction feed top feeder
- Deep pile 450mm capacity feeder
- SmartStep table drop
- Up to 16 creases per sheet
- Creasing blade and matrix guaranteed for life
- Dual creasing blades
- 8500 sheets per hour
- In-line perforating as standard

Key Features

Speed	8500 sph (A4), 11,000 sph (A5)
Sheet size, max:	700mm x 385mm
Sheet size, min:	210mm x 148.5mm
Sheet weight, max:	0.4mm (approx 400 gsm)*
Sheet weight, min:	0.11mm (approx 80gsm uncoated)*
Creases per sheet:	16
Creasing blades:	2
Programmed applications:	max: 50
Repeat crease distance:	min: 1mm (depending on paper weight)
Crease distance from lead edge min:	2.5mm
Crease distance from tail edge min:	2.5mm
Dimensions (approx):	L 2129mm x W 660mm x H 1235mm
Weight:	210kgs (approx)
Power requirement:	100-240v 50/60hz
*including laminated material	

Options

Narrow creasing blade
Side/stop perfering blade



Images to show the benefit of creasing before folding.

New AutoCreaser Pro 385



NEW

Creaser linked to the AutoFold Pro

AutoFold Pro - linked to the AutoCreaser Pro 385

The AutoCreaser Pro 385 can be linked to the AutoFold Pro to provide the complete solution to the problem of cracking that occurs when folding digitally printed output. It is equally effective in dealing with conventionally printed card, laminates or cross-grained stock.

AutoFold Pro

The AutoFold Pro is an automatic folding machine designed specifically for the professional digital or litho printer. It is a versatile folding unit when linked to a creasing machine, designed for folding digital stocks using our patented 'Flying Knife' technology, developed to prevent the scuffing and marking on digital stocks caused by folding using conventional methods. The AutoFold Pro is simply wheeled up to ANY creaser and the height of its vacuum feed conveyor is adjusted to the exit height of the creaser.

Pre-creased sheets from the creaser are delivered directly onto the AutoFold Pro feed conveyor; here they are accurately registered to the side-lay before being folded as programmed and delivered onto a motor driven shingling delivery system, ensuring consistent, high quality stacking. The AutoFold Pro allows the user of ANY manufacturer's creaser to improve their productivity and quality immediately.

- 7" HD SmartScreen touch screen operation
- 6240 sph
- Takes stock up to 0.4mm (approx 400 gsm)*
- Alpha-numeric memory
- Wheel up to any manufacturer's creasing machine
- Long conveyor for longer sheets

Key Product Features

Speed:	6240 sheets per hour
Dimensions:	L 1700mm x W 680mm x H 1220mm
Electrical:	240v 50/60hz
Sheet size:	630mm x 385mm*
Sheet weight:	Up to 0.4mm (approx 400gsm) including laminated material

*Max sheet size depends on fold type



AutoCreaser Pro 33 linked to the AutoFold Pro



AutoCreaser Pro 385 linked to the AutoFold Pro



Single Fold



Double Parallel Fold



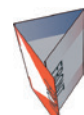
Engineering Fold



Gate Fold



Closed Gate Fold



Letter Fold



Concertina Fold

Folding and creasing options

Folders

TF MEGA-S up to A4

The small TF MEGA-S can make the most popular fold types. The fold adjustment is done easily with a keystroke with symbols on the two fold plates. Additionally, a fine adjustment for the fold length and the fold parallelism is available.

The TF MEGA-S is extremely solid and designed for daily use. It can also handle a bigger number of documents. The feeding station and the conveyor stacker have a capacity of up to 200 sheets. It is also suitable for recycled paper.

TF MEGA-M up to A3

The TF MEGA-M is a durable table top folder for higher volumes of paper. It is suitable for all folding-applications in offices, mail-rooms or copy-shops.

Both folding plates of the TF MEGA-M have a self-explaining scale for 7 different fold types including cross fold. Additionally each plate is equipped with a quick and fine-tune adjustment to achieve perfect folding results. Because of the adjustment device of the feeding pressure, the TF MEGA-M is ready for use for a wide range of different paper weights. The conveyor stacker guarantees an accurate storage up to 300 sheets. It is extendable according to different paper sizes and folding types.

TF MEGA-A up to A3

The adjustment of the folding plates of the TF MEGA-A is set automatically by a keystroke. The folding machine is able to make 7 different fold types, including cross fold. Each plate is equipped with an automatic fine-tune adjustment to achieve perfect folding results, whether the application is a letter, flyer, brochure or billing statement. Because of the adjustment of the feeding pressure and paper separation, the TF MEGA-A is ready for use for a wide range of different paper weights.

The conveyor stacker (automatically adjustable) guarantees an accurate storage of up to 300 sheets. It is extendable according to different paper sizes and folding types.

Key Product Features

Paper sizes: - Max. 225 x 360 mm - Min. 85 x 150 mm

Single, Concertina, Gate, Double parallel

2 fold plates with quick and fine adjustment

Paper weight: 50-150gsm

Display with counter, pre-counter and status indication

Adjustable conveyor stacker for up to 200 sheets

Max speed up to 6,900 folds per hour



Key Product Features

Paper sizes from A6 to A3

Single, Concertina, Gate, Double-parallel, Irregular concertina, Letter, and Cross fold

2 folding plates with quick and fine-tune adjustment

Paper Weights: 50 - 150gsm

Display with 4-digit counter

Extendable conveyor stacker

Max. stacker capacity: 300 sheets

Max speed up to 7,200 folds per hour



Key Product Features

Paper sizes from A6 to A3

Single, Concertina, Gate, Double-parallel, Irregular concertina, Letter, and Cross fold

Paper Weights: 50 - 150gsm

Display with 4-digit counter and pre-counter

Automatic conveyor stacker adjustment

Max. stacker capacity: 300 sheets

Max. speed up to 7,200 folds per hour



Major Folder

The Morgana Major is a simple to operate suction feed folding machine designed and manufactured to handle a wide range of paper weights and types of fold. Since its introduction, 1000s of Morgana Folders have been installed world-wide and these testify to both the recognised performance and value, and also the many features included as standard.

- Powerful suction feeder
- Side lay alignment of the sheets, prior to folding
- Fully enclosed fold plates with 'dial-a-fold'
- Plug in perforating and scoring attachment
- Variable speed
- Tray to catch work when perforating or scoring
- Long delivery belt stacker
- Counting & batching
- Double sheet, anti jam detector

Key Product Features

Speed:	Variable up to 27000 sheets per hour
Dimensions:	L 1168mm x W 493mm x H 1280mm
Electrical:	240v 50/60hz
Sheet size:	648mm x 365mm
Sheet weight:	56gsm - 240gsm approx



DocuFold Pro

The Morgana DocuFold Pro is a brand new concept fully automatic paper folding machine. Equipped with the latest SmartScreen technology, it enables an operator with minimum training to carry out a variety of folds from an icon driven touch screen. An unlimited alpha numeric memory is available to store all standard and non standard jobs.

- Powerful suction feeder
- 7" HD SmartScreen
- Side lay alignment of the sheets, prior to folding
- Fully enclosed fold plates. Fitted with anti-static brushes
- Plug in perforating and scoring attachment
- Variable speed up to 27,500 sph
- Driven delivery belt stacker
- Counting & batching
- Double sheet, anti jam detector

Key Product Features

Speed:	Variable up to 27,500 sheets per hour
Dimensions:	L 1240mm x W 555mm x H 1370mm
Electrical:	240v 50/60hz
Max sheet size:	674mm x 365mm
Sheet weight:	56gsm - 240gsm approx



Creaser/Folders

AutoFold Pro

The AutoFold Pro is an automatic folding machine designed specifically for the professional digital or litho printer. It is a versatile folding unit when linked to a creasing machine, designed for folding digital stocks using our patented 'Flying Knife' technology. This was developed to prevent the scuffing and marking on digital stocks is caused by folding using conventional methods. The AutoFold Pro is simply wheeled up to ANY creaser and the height of its vacuum feed conveyor is adjusted to the exit height of the creaser.

Pre-creased sheets from the creaser are delivered directly onto the AutoFold Pro feed conveyor; here they are accurately registered to the side-lay before being folded as programmed and delivered onto a motor driven shingling delivery system, ensuring consistent, high quality stacking. The AutoFold Pro allows the user of ANY manufacturer's creaser to improve their productivity and quality immediately.

- 7" HD SmartScreen touch screen operation
- 6240 sph
- Takes stock up to 0.4mm (approx 400 gsm)*
- Alpha-numeric memory
- Wheel up to any manufacturer's creasing machine
- Long conveyor for longer sheets

Key Product Features

Speed:	6240 sheets per hour
Dimensions:	L 1700mm x W 680mm x H 1220mm
Electrical:	240v 50/60hz
Sheet size:	630mm x 385mm*
Sheet weight:	Up to 0.4mm (approx 400gsm) including laminated material

*Max sheet size depends on fold type



DigiFold Pro

The DigiFold Pro is an automatic creasing/folding machine designed specifically for the professional digital or litho printer who has a need to crease and fold digitally printed, heavy weight or cross grained stock. This most versatile machine can be used to crease and fold, as a creaser only when folding is not required and as a perforating machine when needed.

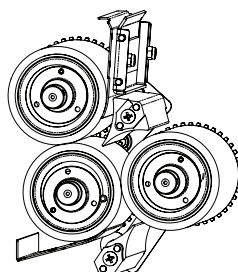
Using our proven patented 'Flying Knife' technology we can ensure that there will be no scuffing or marking on digital stocks caused by using conventional folding methods. Additionally, our DynaCrease mechanism will give the same high quality crease that our customers have come to expect, but without stopping the sheet and therefore significantly improving productivity.

- 7" HD SmartScreen touch screen operation
- 6000 sheets per hour
- Takes stock up to 0.4mm (approx 400 gsm)*
- Alpha-numeric memory
- PosiFeed feed system
- Highly versatile
- 900mm x 385mm with optional extension
- Crease & fold without cracking

Key Product Features

Speed:	6000 sheets per hour
Dimensions:	L 1980mm x W 655mm x H 1265mm
Electrical:	240v 50/60hz
Sheet size, max:	900mm x 385mm*
Sheet weight:	Up to 0.4mm (approx 400gsm) including laminated material

* Needs optional extension table



Flying Knife technology



Single Fold



Double Parallel Fold



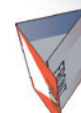
Engineering Fold



Gate Fold



Closed Gate Fold



Letter Fold



Concertina Fold

Folding and creasing options

DigiFold Pro 385

The DigiFold Pro 385 is the latest, fourth generation of the DigiFold series, offering further levels of automation to meet today's demanding applications. It is specifically designed for digital and litho printers who have a need to crease and fold digitally printed, heavy weight or cross-grained stock.

The DigiFold Pro 385 is equipped with the very latest in technology to enable automatic set up of jobs, including setting of all feeder functions and fold roller settings, by selecting just a few simple parameters on the Morgana SmartScreen touch screen control. The new deep pile feeder allows stacking of up to 450mm of paper to enable longer runs and is equipped with a SmartStep table drop for fast loading of shorter run jobs.

Paper feeding is controlled by a new vacuum top feeding drum that can automatically change between a wide range of paper types and thickness's with little operator intervention.

The DigiFold Pro 385 is equipped with a Dynacrease blade and matrix, to allow the highest speed when creasing and folding, and with a fixed blade and matrix for crease only mode. This allows operators to select the widest range of applications to be produced from the SmartScreen with all other functions being set automatically. The unique DynaCrease system places creases into the stock whilst running to an accuracy of ± 0.1 mm. This system allows us to produce at up to 6000 sheets per hour.

- Crease and fold sheets up to 0.4mm without cracking
- Intuitive SmartScreen touch screen control
- Suction fed top feeder
- Deep pile 450mm capacity feeder
- SmartStep table drop
- 6000 sheets per hour
- Crease only mode
- Patented 'Flying Knife' folding mechanism
- Max sheet size - 385mm x 700mm
- Creasing blade and matrix guaranteed for life
- In-line perforating as standard

The DigiFold Pro 385 is controlled entirely by the latest version of the Morgana SmartScreen touchscreen control. Sheet size and thickness are entered, along with finish fold type - all other functions are then set automatically by the machine, including the air separation, side guide position, fold roller, and table height. For non-standard sheet sizes or fold types, an alpha-numeric memory allows an unlimited number of jobs to be stored and named as you choose, making job recall much easier using your own job name and numbers.

The DigiFold Pro 385 uses our patented 'Flying Knife' technology which was developed to prevent the scuffing and marking on digital stocks that are caused by folding using conventional methods. This dispenses entirely with buckle plates and conventional knives, using instead an electronically controlled contoured flying knife around extra large diameter rollers and moving at the same speed as the material passing through the machine.

The folding section uses a dynamic sheet deflector at the leading edge of the sheet to allow single or multiple folds to be performed without risk of scratching or marking.

The DigiFold Pro 385 can be used as an integrated creaser/folder performing both functions in a single pass, as a stand-alone creaser when folding is not required, or as a perforator when creasing and folding are not required. Up to five perforation wheels can be fitted across the width of the sheet.

Key Features

Speed	(A4 in half) 6000 sph
Sheet size, max:	700mm x 385mm
Sheet size, min:	210mm x 148.5mm
Sheet weight, max:	0.4mm (approx 400 gsm)
Sheet weight, min:	0.11mm (approx 80gsm uncoated)
Folds per sheet:	2
Creasing blades:	2
Programmed applications:	max: 50
Repeat fold distance:	min: 70mm (depending on paper weight)
Crease distance from lead edge:	min: 2.5mm
Fold distance from lead edge:	min: 50mm (depending on paper weight)
Crease distance from tail edge:	min: 2.5mm
Fold distance from tail edge:	min: 50mm (depending on paper weight)
Fold length, min:	70mm
Dimensions (approx):	L 2275mm x W 680mm x H 1270mm
Weight:	260kgs (approx)
Power requirement:	100-240v 50/60hz

Options

Narrow creasing blade
Stop perforation



New DigiFold Pro 385

Cutters/Slitters

AeroCut Devices

The revolutionary AeroCut range of professional multi-function finishing devices has been designed for all businesses and organisations that need to cut and crease both litho and digitally printed sheets. The AeroCut uses an upper belt air suction feeder system, allowing it accurately to feed the most difficult stocks such as high gloss, coated and uncoated substrates, up to and including 350 g/m².

High quality cutter and slitters that guarantee a perfect finish every time

The AeroCut range comes with two side slitters and two double slitters that offer both consistent durable cutting and also deflect waste after trimming. A high quality cross cutting blade ensures an accurate finish to each individual finished piece and also allows easy disposal of the trim waste into a high capacity removable waste bin.

AeroCut Ultra Crease System

The AeroCut Classic and Quatro take advantage of Uchida's class leading 'Ultra-Crease' system. This enables the units to produce very accurate and repeatable creasing every time and eliminates toner cracking.

The Uchida 'Ultra-Crease' system has 5 individual crease settings that enable the operator to select the best possible creasing for the type of paper/card being used. These settings can also be adjusted on the fly for non-stop production.

Quick job change

The patented InstaSet bar makes job change extremely easy and quick. Change from Business cards to post cards to A4, A5, A6 etc. All standard format sizes can be finished quickly and accurately, you can also order bespoke InstaSet bars for your special non-standard jobs.

Standard InstaSet Bar Formats

Standard

A: SRA3/A3/A4(portrait) to 85/90mm width business cards

B: SRA3 to A3/A4/A5/A6

Optional

C: A3 to A4/A5/A6

D: A4(landscape) to 85/90mm width business card

E: A4(landscape) to A5/A6

F: SRA3/A3 to Photo L/2L

G: A4 to Photo L/2L

H: SRA3/A3/A4 to CD jacket

Intuitive user interface

The AeroCut Classic and Nano have an intuitive touch panel operation screen where changes to the job can be easily entered and saved into the machine memory for recall, the panel is coloured on the Quatro - shown here. The screen also indicates any errors in the programming and suggests what you need to do to correct it. All machine functions including sheet size and job layout are shown, allowing changes from job to job to be selected in a few seconds.

AeroCut Nano

The AeroCut Nano is the entry level model for cutting and slitting operations. It comes as standard with 2 single and 2 double slitter blades. These blades can be easily adjusted (shown below) and secured using Uchida's new patented InstaSet bar technology.

The operator is able to change jobs very quickly in the knowledge that production accuracy will be retained. As well as the standard InstaSet bar formats, the cutters can be manually adjusted for specific job sizes.

- Slit
- Cross cut
- Minimum paper size A4
- Minimum work size 85.50 mm



The AeroCut Classic

The AeroCut Classic professional card cutter and creaser offers finishing for any sheet sizes up to max. 365mm(W) x 520mm(L). All functions, cutting, creasing and perforating are operated and saved via the touch screen control unit enabling easy programming of multiple function jobs. Once programmed, the jobs can be saved into one of 60 memory locations for easy recall of repeat jobs.

- Slitting
- Cross Cutting
- Creasing
- Rule & Matrix creasing mechanism
- 60 memory locations



AeroCut Quatro

The AeroCut Quatro is the latest in Morgana's range of multifunction finishing devices, designed to automate the key finishing processes in one simple to operate, compact machine.

The machine is a highly accurate slitter, cutter and creasing device, that can take your oversized prints from a digital or litho press and deliver a wide range of finished documents.

- Slit, cut & crease in one pass
- 263 pre-programmed templates for minimum setup
- Additional 90 memory locations
- Rule & Matrix creasing mechanism
- Perforation unit as standard
- Accurate to 0.1mm



Key Product Features - AeroCut Nano

Basic functions:	Slit, cross cut
Maximum paper size:	330(W)x488(L)mm
Minimum paper size:	A4
Minimum work size:	85x50 mm
Paper weight:	120-350 gsm Depending on paper quality
Speed:	126 business cards/min.
Feeding system:	Upper belt air suction feed
Features:	Skew adjustment
	Cutmark registration
	Double feed detection
	Touch screen with 40 job memories
Dimensions:	565(W) x632(D) x963(H) mm
Footprint:	1190(W) x800(D) x1540(H) mm
Net weight:	70 kg
Power source:	100-240VAC, 50/60Hz
Power consumption:	100W

Key Product Features - AeroCut Classic

Basic functions:	Slitting Cross cutting
	Creasing
	Perforating
Operation:	Touch screen
Feeding system:	Air blow + Upper belt suction feed
	Cut mark register + Skew adjustable
	Capacity 60 mm
In-feed paper size, min:	Width 210 - 365 mm
	Length 210 - 520 mm
Min. finished size:	Width 55 mm
	Length 50 mm
Paper weight:	120 - 350 gsm
Speeds:	8 sheets / min. A4 2 cuts 1 crease
	4 x greetings cards = 7 SRA3
	21 x business cards = 6 SRA3
Dimensions:	714(D) x 1037(H) mm
Footprint:	1720(W) x 714(D) x 1500(H) mm
Net weight:	180 kg
Power supply:	100 - 240 VAC 50/60Hz 240W

Key Product Features - AeroCut Quatro

Basic functions:	Slitting Cross cutting Creasing
	Micro perforating
Operation:	5 inch color touchpanel
Job memories:	263 preset jobs
	60 + 30 memories
	Air blow + Upper belt suction feed
	Cut mark register + Skew adjustable
Feeding system:	Double feed detectable
	Capacity 100 mm
In-feed paper size:	Width 210 - 365 mm
	Length 210 - 520 mm (flex mode: 900mm)
Min. finished size:	Width 55 mm
	Length 50 mm
Paper weight:	120 - 350 gsm
Speeds:	6 sheets / min.
	A4 perforated 20 sheets / min.
	A4 2 cuts 1 crease
	4 x greetings cards = 14 SRA3
	8 x post cards = 12 SRA3
	21 x business cards = 8 SRA3

Options for the AeroCut Quatro

- Additional slitter units (including position fixed 6 blades)
- Rotary tool units
- Scoring units with 2 wheels
- *Micro perfo. Upto 3 blade and scoring wheels can be added
- Cross part perfo. 50mm, 60mm and 70mm. (Not available with creasing unit)
- Feeding unit
- Ionizer
- Optional 25 up card cutting module
- AeroCut plug-in for Adobe Illustrator



Example of imposed sheets

Perfect Binding - PUR

DigiBook 150 and DigiBook 200

PUR is the strongest, most flexible binding adhesive available and offers several additional advantages over other binding adhesives. When inks, coatings or digital print toners are present in the spine area these can compromise the strength of typical hotmelt perfect binding. PUR is resistant to this and will form a super-strong bond with all weights and finishes of paper stocks. In addition PUR works well with synthetic and recycled-content stock.

Entry level PUR binders are ideally suited to traditional and digital printers who require short runs of PUR perfect bound books to a professional standard.

DigiBook 150

- Up to 150 Cycles per hour
- Touch screen operation
- Automatic opening and closing of clamp
- Binding length (spine) from 120mm up to 380mm
- Spine thickness from 1 to 50 mm
- Spine preparation by sophisticated milling and notching device
- Paper chip extractor
- Patented hermetically sealed PUR application system for spine and side gluing with automatic glue cut-off
- Semi automatic cleaning and sealing of the glue head

Key Product Features DigiBook 150

Books per hour:	Up to 150
Number of clamps:	1
Touch screen:	Yes
Book size, max:	380mm x 320mm
Book size, min:	120mm x 110mm
Block/spine thickness:	1 - 50mm
Cover dimension, max:	700mm x 380mm
Cover dimension, min:	222mm x 120mm
Cover weight, max:	400 gsm
Dimensions:	L 1670mm x W 1070mm x H 1560mm
PUR glue tank capacity:	Up to 3kg
Machine weight:	400kg (gross) - 250kg (net)
Power requirement:	220v, 13 amp



DigiBook 200

- Up to 200 Cycles per hour
- Touch screen operation with spine thickness measuring and automatic set-up
- Binding length (spine) from 120mm up to 380mm
- Adjustable spine preparation by sophisticated milling and notching device
- Paper chip extractor
- Patented hermetically sealed PUR application system for the spine and side gluing with automatic glue cut-off
- Automatic cleaning and sealing of the glue head

Key Product Features DigiBook 200

Books per hour:	Up to 200
Number of clamps:	1
Touch screen:	Yes
Book size, max:	380mm x 320mm
Book size, min:	120mm x 110mm
Block/spine thickness:	1 - 50mm
Cover dimension, max:	700mm x 380mm
Cover dimension, min:	222mm x 120mm
Cover weight, max:	400 gsm
Dimensions:	L 1670mm x W 1070mm x H 1560mm
PUR glue tank capacity:	Up to 3kg
Machine weight:	400kg (gross) - 250kg (net)
Power requirement:	220v, 13 amp



Options

- End Paper kit
- Extended cover kit

The DigiBook 200 has an optional electronic connection to the Morgana AutoCreaser Pro for cover creasing.

Perfect Binding - PUR

DigiBook 300

The DigiBook 300 is ideally suited to traditional and digital printers who require short runs of PUR perfect bound books to a professional standard. These innovative machines are equipped with a patented closed gluing system where the spine and side gluing is applied by a slot applicator for the utmost binding quality and accuracy.

There are a thousand alpha-numeric memories available, which enable repeat jobs to be saved for later recall, thus providing totally automatic setup in a few seconds.

- Up to 300 books per hour
- Touch screen operation complete with automatic format change
- 1000 alphanumeric memories available
- Pneumatic opening and closing of clamp
- Spine preparation by sophisticated milling device
- Paper chip extractor
- Patented hermetically sealed PUR application system for spine and side gluing with automatic glue cut-off
- Angled work surface keeps books in a vertical position

Options

- Extended cover kit
- Additional hot melt glue tank
- Automatic thickness measurement and set-up
- Gauze attachment for book block production

Note: the production speed varies according to material size
Compressed air required: minimum 7 bar/maximum 9 bar

Key Product Features

Books per hour:	Up to 300
Number of clamps:	1
Touch screen:	Yes
Book size, max:	450mm x 320mm
Book size, min:	100mm x 120mm
Milling width:	3mm
Block/spine thickness:	2 - 50mm
Cover dimension, max:	710mm x 460mm
Cover dimension, min:	242mm x 120mm
Cover weight, max:	500 gsm
Dimensions:	L 2470mm x W 1270mm x H 1660mm
PUR glue tank capacity:	Up to 3kg
Machine weight:	750kg (gross) - 525kg (net)
Power requirement:	16amp 3phase + E + N 400v 50/60hz



DigiBook 450

The DigiBook 450 is ideally suited to litho and digital printers who require medium to long runs of PUR perfect bound books to a professional standard. This innovative machine is equipped with a patented closed gluing system where the spine and side gluing is applied by a slot applicator for the utmost binding quality and accuracy.

- Up to 450 books per hour
- Touch screen operation complete with automatic format change
- Binding length (spine) from 120mm up to 450mm
- Spine thickness from 1 to 50 mm
- Spine preparation by sophisticated notching device
- Paper chip extractor
- Patented hermetically sealed PUR application system for spine and side gluing with automatic glue cut-off
- Automatic cleaning and sealing of the glue head

Key Product Features

Books per hour:	Up to 450
Number of clamps:	1
Touch screen:	Yes
Book size, max:	450mm x 320mm
Book size, min:	100mm x 120mm
Milling width:	3mm
Block/spine thickness:	1 - 50mm
Cover dimension, max:	710mm x 460mm
Cover dimension, min:	242mm x 120mm
Cover weight, max:	500 gsm
Dimensions:	L 2870mm x W 1670mm x H 1660mm
PUR glue tank capacity:	Up to 3kg
Machine weight:	1150kg (gross) - 850kg (net)
Power requirement:	16amp 3phase + E + N 400v 50/60hz



Numbering Machines /Jogger

FRN5 Rotary

The rotary action FRN5 numbering machine is the ideal unit for lower volume applications and shares many of the same features as the FSN, including the ability to feed SRA3 landscape or portrait. The ergonomic design allows both the feed and delivery tables to be stored when the machine is not in use.

- Fast, simple make-ready
- Imprinting capability
- Micro-porous ink roll system
- Perforates & numbers anywhere on the sheet in one pass
- Adjustable platen pressure
- Two perforators and one scorer as standard
- Electronic sheet spacing
- Continuous operation
- Fully mobile
- Feeds carbonless sets with open & closed edge leading

FSN Rotary

The FSN is a heavy duty, high volume, suction feed numbering machine featuring electronic pulsing and feeding from the bottom of the stack so that loading can be done 'on the run.' Positive control of paper from feed to delivery ensures consistent register throughout every run. The FSN takes up to 8 parallel or convex numbering heads.

- Precision-feeding and sheet control
- Up to 8 parallel or convex heads
- High power vacuum and air pump
- Fast, simple make-ready
- Micro-porous ink roll system
- Perforates & numbers anywhere on the sheet in one pass
- Adjustable platen pressure
- 2 perforators & a scorer as standard
- Electronic sheet spacing
- Continuous operation
- Feeds carbonless sets with open & closed edge leading
- Optional SRA2 unit

System 90 Jogger

The Morgana Jogger is an essential piece of equipment for printers who need to 'knock up' paper or carbonless sets in sizes up to SRA2. It combines well with the AutoCreaser Pro range, Morgana Rotary numberer, DigiCoater or Uchida collators, depending on the application.

The height of the Jogger can be adjusted, as can the angle.

- 700mm x 520mm sheet size
- Multi-adjustable
- Full speed control
- Adjustable rotation
- Mobile for use with any machine

Key Product Features

Speed:	5500 sheets per hour
Dimensions:	L 900mm x W 780mm x H 1110mm
Electrical:	240v 50/60hz
Sheet size:	460mm x 460mm
Sheet weight:	Takes 6-part carbonless sets
Collars max:	4



Key Product Feature:

Speed:	9000 sheets per hour
Dimensions:	L 1168mm x W 457mm x H 990mm
Electrical:	240v 50/60hz
Sheet size:	460mm x 460mm
Sheet weight:	Takes 7-part carbonless sets
Collars max:	8



Key Product Features

Dimensions:	L 700mm x W 500mm x H 900mm
Electrical:	240v 50/60hz
Sheet Size:	700mm x 520mm



Feeders and Collators

510 Feeder/Collator Series

The 510 series of feeders/collators are based on a standard 10 station, high capacity bin tower structure with centre registration. Four different models are available in the range; the C510 Collator, the CF510 Feeder/Collator, the AC510 Collator with air separation and the ACF510 Feeder/Collator with air separation.

The units equipped with feeder mode are ideally suited to customers who have a range of digital and litho printed work, some of which may need to be collated and some which may come pre-collated from a digital engine. There may also be a need to feed digitally printed work from black and white devices, combining coloured pages or covers.

Unlike all other friction feed systems on the market, Morgana's new AC/ACF510 models offer a unique air separation system. Each bin has fans blowing air into the stack from two sides, radically improving the feeding of statically charged or normally hard to feed stock. The air separation in the 510 Series sets new standards in feeding, ideal for digitally printed media.

- Maximum sheet size: 320 x 457mm
- Minimum Sheet size: 120 x 210mm
- Up to 4000 sets per hour in collating mode
- Unique air separation on AC/ACF units
- Easy to programme memory function for repeat jobs
- Compatible with the BM61/2000S booklet making systems

8000 Feeder

Within the industry there has always been a need to feed material in a controlled fashion.

The 8000 Feeder is height adjustable and can be wheeled up and the height adjusted to suit the recipient device. Feeder setup is simplicity itself.

A fully adjustable air system enables a steady flow of the media to be released into your chosen device. You can continue to load on the run to increase productivity.

- Powerful suction feeder handles a wide range of paper weights & sizes
- Compact footprint
- Fully adjustable height
- Side lay register system
- Speed control
- Proven feed technology
- Fast make-ready
- 5500+ sheets per hour



Key Product Features

No. of bins:	10
Bin capacity:	28 mm
Sheet size, max:	320 x 457 mm
Sheet size, min:	120 x 210 mm
Paper weight, max:	250 gsm
Paper weight, min:	50 gsm
Collating speed:	Up to 4000 sets/hour
Feed speed (CF510/ACF510):	Up to 10,000 sheets/hour
Centre registration:	Yes
Air separation:	Yes, on AC and ACF models
Receiving tray:	Offset / straight stacking
Dimensions incl. base:	H1925 x W600 x D700 mm
Weight:	150 kg



ACF510 with air separation

As the feeder is mobile it can be easily moved to enable other machines to benefit from the feed capabilities of the 8000 Feeder.

Key Product Features

Sheet size, max:	640mm x 460mm
Sheet size, min:	90mm x 100mm
Paper weight, max:	240gsm (varies according to material and grain direction)
Feed height, max:	980mm
Feed height, min:	810mm
Speed per hour (A4):	max: 5,500
Feed system:	Suction/air feed
Dimensions:	L 1445mm x W 625mm x H 1085mm
Weight:	133kgs
Power requirement:	240v 50/60hz
Options:	Narrow sheet guide
Note: the production speed varies according to material size	

EBA Paper Cutters and Power Guillotines

EBA Guillotines

EBA has established a global reputation as a leader in the design and manufacture of innovative small format guillotines and paper cutters. Designed and manufactured in Germany, these machines are built to highest European CE specification and are available in cutting widths from 430mm to 720mm. Safety is paramount in the design with all models fully equipped with either safety covers or the latest in IR safety guard technology.

Whether you need is for a basic manual machine for occasional cutting, or a fully programmable high production machine, Morgana will have an EBA solution to meet your requirement. Full specification details of every model in the range are available from our website.

Office Guillotines - Manual

EBA 4300

Attractively priced entry model in brand name quality Made in Germany. With a hinged, transparent safety guard on the front table with locking device for the blade lever. Designed as table top machine, a stand is available as an option (at an extra cost).

SCS - the Safety Cutting System made by EBA provides numerous safety features:

- Safety blade lever with patented overload protection
- Resharpenable blade made of German high-quality steel
- Solid all-metal construction
- Blade change from the front without removing machine covers

Key Product Features

Cutting Length:	430mm
Cutting Height:	20mm
Narrow Cut:	36mm
Table Depth:	340mm
Blade Drive:	Electro-mechanical
Clamping System:	'Fast Flick' action clamp
Backgauge:	Manual



EBA 4305

Manual office guillotine with 430mm cutting length and 435mm table depth for formats up to A3.

SCS - the Safety Cutting System made by EBA provides numerous safety features:

- Hinged, transparent safety guard on the front table
- Transparent safety cover on the rear table
- Safe and convenient blade change from the front
- Blade changing device with covered cutting edge
- Patented fast flick action clamp

Key Product Features

Cutting Length:	430mm
Cutting Height:	40mm
Narrow Cut:	34mm
Table Depth:	435mm
Blade Drive:	Electro-mechanical
Clamping System:	'Fast Flick' action clamp
Backgauge:	Manual



EBA 4705

Powerful manual office guillotine with 475mm cutting length and 70mm cutting height.

SCS - the Safety Cutting System made by EBA provides numerous safety features:

- Hinged, transparent safety guard on the front table
- Safety catch (locks blade lever in upper position)
- Blade depth adjustment from the outside of the machine
- Cutting stick can be turned or replaced easily
- Solid steel blade carrier
- Adjustable blade guides made of hardened steel.

Key Product Features

Cutting Length:	475mm
Cutting Height:	70mm
Narrow Cut:	30mm
Table Depth:	455mm
Blade Drive:	Electro-mechanical
Clamping System:	Spindle clamp
Backgauge:	Manual



EBA Paper Cutters and Power Guillotines

EBA 4315

Office guillotine with electro-mechanical blade drive, manual clamp and easy-cut for formats up to A3.

- Cuts up to 500 sheets of paper (70 g/m²) or bound brochures up to 40 mm
- Equipped with the new, patented EASY-CUT blade activating bars for convenient and safe cutting
- Patented EBA safety drive

EBA 4350

Convenient office guillotine with electro-mechanical blade drive, automatic clamp and easy-cut for formats up to A3.

Equipped with the new, patented EASY-CUT blade activating bars for convenient and safe cutting. Comprehensive SCS safety package:

- Electronically controlled safety guard on the front table
- Transparent safety cover on the rear table
- Main switch and safety lock with key
- Automatic blade and clamp return from every position
- Electromechanical blade and clamp drive

Electro-mechanical or hydraulic guillotines with transparent safety guard

EBA 4815

Ideal for inplant / CRD and small printshop customers. Safety tested by major independent safety laboratories and manufactured under the European "CE"-standards. Complete with stand and storage shelf under the machine.

The EBA 4815 guillotine offers high cutting performance which is easy and safe to operate with a new digital display.

- 24 volt controls (low voltage)
- Blade depth adjustment from the outside of the machine
- Spindle guided backgauge with hand crank
- Optical cutting line with bright and durable LEDs
- Two side lays each on front and rear tables
- Solid steel blade carrier and adjustable blade guides
- Optional set of side tables available at an extra cost

EBA 4850

Professional guillotine with easy-cut, automatic clamp, programmable power backgauge with touch pad and safety guards.

- Electronically controlled true two-hand operation
- Automatic blade and clamp return from every position
- Main switch and safety lock with key
- Electric backgauge drive with touch pad for easy setting
- Preprogrammed measurements for standard paper sizes.

Key Product Features

Cutting Length:	430mm
Cutting Height:	40mm
Narrow Cut:	35mm
Table Depth:	435mm
Blade Drive:	Electro-mechanical
Clamping System:	Fast Flick' action clamp
Backgauge:	Manual



Key Product Features

Cutting Length:	430mm
Cutting Height:	40mm
Narrow Cut:	35mm
Table Depth:	435mm
Blade Drive:	Electro-mechanical
Clamping System:	Automatic clamp
Backgauge:	Manual



Key Product Features

Cutting Length:	475mm
Cutting Height:	80mm
Narrow Cut:	30mm
Table Depth:	485mm
Blade Drive:	Electro-mechanical
Clamping System:	Spindle clamp
Backgauge:	Manual



Key Product Features

Cutting Length:	475mm
Cutting Height:	80mm
Narrow Cut:	30mm
Table Depth:	458mm
Blade Drive:	Electro-mechanical
Clamping System:	Automatic clamp
Backgauge:	Manual



EBA Paper Cutters and Power Guillotines

EBA 4855

Professional guillotine with easy-cut, automatic clamp, programmable power backgauge with touch pad and safety guards.

- Electronically controlled true two-hand operation
- Automatic blade and clamp return from every position
- Main switch and safety lock with key
- Electric backgauge drive with touch pad for easy setting
- Preprogrammed measurements for standard paper sizes.

EBA 5255

Equipped with the new, patented EASY-CUT blade activating bars for convenient and safe cutting. The ergonomic working height of 94 cm guarantees effortless, fatigue-free operation.

- Hinged, electronically controlled safety guard on the front table
- Safety cover on the rear table
- Main switch and safety lock with key
- Electronically controlled true two-hand operation
- 24 volt controls (low voltage)
- Automatic blade and clamp return from every position

EBA 6655

Professional guillotine with easy-cut, automatic clamp, programmable power backgauge with touch pad and safety guards.

- Electric backgauge drive with touch pad for easy setting
- Measurement readout in cm or inches (display accurate to 1/10 mm or 1/100 inch)
- 99 programs with 99 steps in each program (up to 15 repeat cuts can be integrated into a program as one single program step)
- Automatic SET function for reference measurement via start button
- Electro-mechanical blade and clamp drive
- Blade made of German high quality steel
- Optical cutting line with bright and durable LEDs

Electro-mechanical or hydraulic guillotines with IR light beam safety curtain

EBA 4860

Professional guillotine with easy-cut, automatic clamp, programmable power backgauge with touch pad and IR light beam safety curtain on the front table.

Comprehensive SCS safety package:

- IR light beam safety curtain on the front table
- Safety cover on the rear table
- Main switch and safety lock with key

Key Product Features

Cutting Length:	475mm
Cutting Height:	80mm
Narrow Cut:	35mm
Table Depth mm:	450mm
Blade Drive:	Electro-mechanical
Clamping System:	Automatic clamp
Backgauge:	Electric



Key Product Features

Cutting Length:	520mm
Cutting Height:	80mm
Narrow Cut:	35mm
Table Depth:	520mm
Blade Drive:	Electro-mechanical
Clamping System:	Automatic clamp
Backgauge:	Electric



Key Product Features

Cutting Length:	650mm
Cutting Height:	80mm
Narrow Cut:	25mm
Table Depth:	610mm
Blade Drive:	Electro-mechanical
Clamping System:	Automatic clamp
Backgauge:	Electric



Key Product Features

Cutting Length:	475mm
Cutting Height:	80mm
Narrow Cut:	35mm
Table Depth:	450mm
Blade Drive:	Electro-mechanical
Clamping System:	Automatic clamp
Backgauge:	Electric



EBA Paper Cutters and Power Guillotines

EBA 5260

The EBA 5260 guillotine offers high cutting performance which is easy and safe to operate with new touch pad programming. Hydraulic precision drive for blade and clamping, electronically guarded front table area, an electronic hand wheel for fine adjustment of the back fence.

- Electromechanical
- IR safety curtain
- Hydraulic cut
- Hydraulic clamp
- Touch pad programming

Key Product Features

Cutting Length:	520mm
Cutting Height:	80mm
Narrow Cut:	35mm
Table Depth:	520mm
Blade Drive:	Electro-mechanical
Clamping System:	Automatic clamp
Backgauge:	Electric



EBA 6660

Compact guillotine with a cutting length of 650mm, electro-mechanical blade drive and clamping system. Ideal for busy inplant / CRD's and small printshops. Latest IR safety guards. Complete with stand and storage shelf under the machine.

- Power back gauge
- IR safety curtain
- Electro-mechanical cut
- Electro-mechanical clamp
- Touch pad programming
- Optional side tables

Key Product Features

Cutting Length:	650mm
Cutting Height:	80mm
Narrow Cut:	25mm
Table Depth:	610mm
Blade Drive:	Electro-mechanical
Clamping System:	Automatic clamp
Backgauge:	Electric



EBA 5560 LT (Shown with optional LT)

Professional guillotine with hydraulic blade and clamp drive, EASY-CUT, programmable power backgauge with touch pad and IR light beam safety curtain on the front table.

- Power back gauge
- Automatic blade and clamp return
- Foot pedal for pre-clamping
- Memory key for repeat cuts
- Programmable EJECT function
- Adjustable blade depth

Key Product Features

Cutting Length:	550mm
Cutting Height:	92mm / 95mm without false clamp
Narrow Cut:	60mm / 32mm without false clamp
Table Depth:	570mm
Blade Drive:	Hydraulic
Clamping System:	Automatic clamp
Backgauge:	Electric



EBA 7260

Our top Model: Guillotine with easy-cut, hydraulic clamp, Programmable power backgauge with electronic control module and IR light beam safety curtain on the front table.

- Fully programmable backgauge control module
- Digital display for measurement readout in cm or inches
- Electro mechanical cut
- Memory key for repeat cuts (manual) and additional automatic memory
- Electronic control module
- Blade changing device with covered cutting edge

Key Product Features

Cutting Length:	720mm
Cutting Height:	80mm
Narrow Cut:	90mm / 20mm without false clamp
Table Depth:	720mm
Blade Drive:	Electro-mechanical
Clamping System:	Automatic clamp
Backgauge:	Electric



Laminators

Easymount Sign

The easymount sign is a highly efficient laminating system at an entry level price. Allowing for easy lamination of signs, roll-up banners, window graphics and more.

It has an impressive laminating speed of 5m a minute, whilst laminating reel-to-reel with it's integral media take-up unit.

- Laminates up to 5m/16ft a minute
- Single lift mechanism
- Hot and Cold systems available
- Integral media take-up unit
- Self gripping mandrels
- Large rollers for even pressure

Easymount Flow

The Easymount® Flow is designed specifically to compliment the market-leading Easymount Wide Format Laminating Systems. Designed and manufactured in the UK, the top of the worktable sits at the same height as the exit plate of the award-winning Easymount, so vinyl, roll-up banners and foam boards exit the system and continue straight onto the table.

The Easymount Flow is completely modular. Additional table sections can be added which cleverly lock together, allowing you to create your own bespoke size. It can also be positioned at the front or rear, making the process easy if you work alone.

The main frame is constructed from high quality steel which sits on castors, allowing the table to be easily moved. A smooth MDF top is included as standard*, as well as a lower shelf to store spare rolls of film, vinyl and cutting accessories.

- Posters, graphics and signs
- Pop-up displays
- Outdoor signage

Trimfast General Purpose Cutter

The Trimfast General Purpose Cutter is available in six different sizes. Each with a strong and stable design, the cutter is made to last.

The anodised aluminium base allows the cutter to be sturdy and hard wearing, the base has a narrow groove that directs the blade tip throughout cutting, providing safety and accuracy whilst using the device.

The cutter is available in six standard sizes from 60cm (24") to 300cm (120"), it also includes blade magazines for standard utility and scoring blades, as well as a 45mm (1 3/4") textile cutting wheel and holder.

Portable and ready to go cutter, no accessories required. Ideal as a table top cutter or can be mounted on an optional stand.

Key Product Features

Overall dimensions:	W 1790-2650mm
Overall dimensions:	D X H 650x1255mm
Warranty:	1 year



Key Product Features

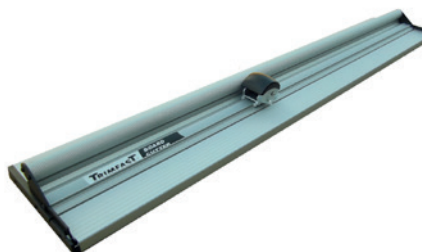
Overall dimensions:	W 1700mm
Overall dimensions:	D x H 1000x930mm
Warranty:	1 year



Key Product Features

Size:	600 x 3000mm
Overall dimensions:	3155 x 280mm
Cutter Size:	600 x 3000mm
Warranty:	1 year

* Trimfast General Purpose Cutter is available in six different sizes. Specification based on TFGPC-60 model.



Matrix Duo Laminator

The Matrix Duo is an innovative laminating system designed for laminating and encapsulating. This model is available in 460mm and 650mm widths.

The Matrix Duo gives the flexibility of single side lamination, encapsulation and even double side lamination, providing an affordable and effective solution, compared to outsourcing.

- Extension arms allowing 1000m rolls
- High quality silicon rollers for even pressure
- Optional Stand

Matrix Laminator 370

The Matrix 370 is the ideal complement to any print environment where there is a need to laminate short to medium run length of high quality print.

With a maximum roll width of 340mm, this machine is ideal for all your SRA3 applications giving a smooth matt or gloss finish on digital and litho printed stocks. The Matrix is able to achieve these finishes due to the adjustable pressure from the pneumatic rollers. It's a really quick & easy set-up without the need for expensive blocks or dies.

Foiling and Spot UV-style effects

All 3 Pneumatic models in the Matrix range not only laminate, they can also create beautifully finished prints using foils and spot UV-style effects.

- Quick warm up time
- Semi-automatic feeder with overlap
- Preset anti-curl settings

Matrix Laminator 530 and Duplex

Matrix® systems are incredibly cost-effective, meaning you can now truly offer a one-stop shop for your customers. Matrix® is the ideal investment in finishing for your digital print work - on demand - for brochures, folders and business cards.

The best value single-sided laminator on the market, is simple to use, easy to maintain, quick and reliable.

The feeder can take a stack of up to 80mm with a stock thickness of 160-350gsm. Productivity of the 530 model can be further enhanced with the addition of an automatic feeder.

- Easy-to-use fingertip control pane
- Semi-automatic feed with auto-overlap
- Automatic separator

Foiling and Spot UV-style effects

All 3 Pneumatic models in the Matrix range not only laminate, they can also create beautifully finished prints using foils and spot UV-style effects.

Key Product Features

Speed:	max 10 metres per minute
Dimensions:	W 900mm x D 2050mm x H1400mm
Electrical:	220/240 AC (V) 13amp
Roll width, max:	500mm
Sheet width, max:	550mm
Machine Weight:	55kg



Key Product Features

Speed:	max 10 metres per minute
Dimensions:	W 800mm x D 1800mm x H 1400mm
Electrical:	220/240 AC (V) 13amp
Roll width, max:	340mm
Sheet width, max:	420mm
Machine Weight:	190kg



Key Product Features

Speed:	max 10 metres per minute
Dimensions:	W 900mm x D 2050mm x H1400mm
Electrical:	220/240 AC (V) 13amp
Roll width, max:	500mm
Sheet width, max:	550mm
Machine Weight:	220kg



Paper Drilling/Stitchers

Citoborma 111

The Nagel electric drill easily and safely handles stacks of paper up to 50 mm thick and has preset hole patterns. Drilling takes place with no effort, efficiently and quickly.

- Variable, self-centering stops
- Stops for processing A3 size
- Elegant solution for drilling waste (drawer)

Citoborma 90 series (Citoborma 190 shown here)

The Citoborma 90 Series, adds greater diversity to the range with features such as the unique FlexoDrill sliding table and the ability to set up pre-programmed drilling patterns in seconds. All models in the 90 series take a 60mm pile height and can be supplied for either bench top or treadle operation. This single spindle model is ideal for the smaller printer and represents outstanding value for money. The Citoborma flexible sliding table provides automatic release after each stroke and takes paper widths up to 470mm.

It provides adjustable throat depth and centring of the paper stack. It can be fixed in any required position and has a retractable left side stop for smooth and fast access.

The individually programmed tabulator bars are interchangeable.

- Quick release sliding table
- 6 pre-programmed hole patterns
- Paper width up to 470mm
- Throat depth up to 105mm
- Can be treadle mounted (Optional extra)

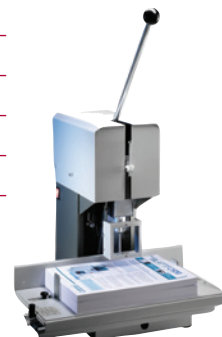
Citoborma 490

This powerful, heavy-duty drill takes from 2 to 6 drilling heads. It features 2-speed drilling and the ability to make paper position adjustments in seconds. Options include air-cooling for drill bits and the ability to fit multi-spindle heads for work where the distance between centres is too close for adjacent heads. 3 phase power requirement.

- 2-6 drill heads, for drill bit diameters from 2-35 mm
- Throat depth of up to 270 mm permits drilling of two A4 sheets (one A3 sheet) in a single pass
- Easy drill head and drill bit replacement to reduce set-up time
- Optimum safety due to two-hand operation and safety cover
- Heavy duty
- Twin speed

Key Product Features

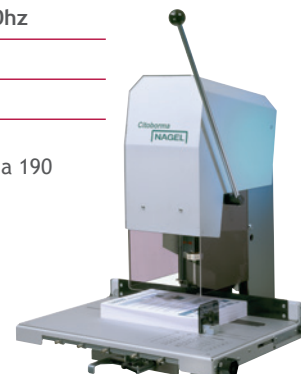
Stops:	Fully adjustable and self-centering
Dimensions:	L 470mm x W 470mm x H 480mm
Drill diameter:	2mm - 9mm
Heads:	1
Electrical:	240v 50/60hz
Sheet Size:	350mm x 250mm
Thickness:	max 50mm



Key Product Features

Stops:	Fully adjustable and self-centering
Dimensions:	L 640mm x W 600mm x H 700mm
Drill diameter:	2mm - 20mm
Heads:	1
Electrical:	240v 50/60hz
Paper width:	470mm
Thickness:	max 60mm

The standard version of the Citoborma 190 and 290 comes as a table top model.



Key Product Features

Stops:	Fully adjustable and self-centering
Dimensions:	L 710mm x W 770mm x H 1390mm
Drill diameter:	2mm - 35mm
Heads:	2-6
Electrical:	3 Phase+E+N 400v 50hz 16amp
Paper width:	470mm x 270mm
Max Thickness:	60mm



Onyx HD7500

The Onyx HD7500 Horizontal is a 24-inch (610mm) open-ended comb, wire, spiral and coil punch machine for calendar and other applications. It features the patented "quick change" die system for changing punch patterns in 30 seconds.

- Pull-Out Extension Table for larger size jobs
- Patented Quick Change Die System "QCDS."
- 24 inch (610 mm) Open Ended Punching for Wider Applications.
- 25 Cycles Per Minute.
- Rated up to 40 sheets or up to 80 Pages of 20 pound (80 gsm)

Onyx HD7700 Ultima

The HD7700 Ultima is the top of the range heavy duty durable table top punch. Combining the Rhin-O-Tuff patented Quick Change Die System with the following exciting new features:

- Extremely durable all metal construction.
- Patented auto reverse feature. Our new overload detection feature triggers an auto reversing function to reduce jamming in the punch.
- Punch up to 5 plastic Mylar sheets regardless of hole pattern (depending on Mylar mil thickness).

Onyx HD 8370 Closing Unit

The HD 8370 Insert-A bind wire inserter/closer closes 3:1 pitch double loop wire in one easy step, eliminating manual insertion of wire into documents. The HD8370 is easily adjustable for varying sizes from 6mm-14mm. The HD8370 can be stand-alone or mounted to any vertical Rhin-O-Tuff OD or HD punch (optional mounting kit available).

- Inserts & closes in 1 easy step. Eliminates manual insertion of wire into documents.
- Module design attachable to both OD and HD series punches (optional mounting kit available).

ONYX HC8024

This time saving device works alongside the HD-7700 punch and automatically extracts the optimum number of sheets to be fed to the punch.

- Maximises speed of punching operation
- Adjustable according to paper weight or thickness

Onyx OD4012

This time saving device works alongside the HD-7700 punch and automatically extracts the optimum number of sheets to be fed to the punch.

- Maximises speed of punching operation
- Adjustable according to paper weight or thickness

HD7500 Wire Comb & Spiral Coil Punch

Electrical Requirement	230v 50hz 4A
Machine Weight:	73.5kg
Dimensions:	(H)432mm x (W)813mm x (D)508mm



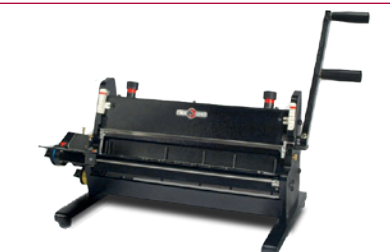
HD7700H Ultima

Electrical Requirement	240v 50/60hz
Machine Weight:	34kg
Dimensions:	(H)229mm x (W)585mm x (D)508mm



HD8370 Closer

Electrical Requirement	Volts AC: 230 50Hz 2A
Machine Weight:	14.1kg
Dimensions:	(H)406mm x (W)534mm x (D)534mm



ONYX HC8024 Wire Closer Module

Electrical Requirement	N/A
Machine Weight:	22.3kg
Dimensions:	(H)356mm x (W)813mm x (D)483mm



OD4012 Closer

Electrical Requirement	Volts AC: 230 50Hz 2A
Machine Weight:	21.3kg
Dimensions:	(H)178mm x (W)381mm x (D)457mm



Thermal Binding

Bindomatic® 5000

The Bindomatic® 5000 is a powerful, manually operated binder designed to meet any document format demand with spine lengths up to 370mm. Bind documents up to 54mm thick (up to 540 sheets of 80 gsm paper, load up to 10 documents per binding cycle (~60 sec) depending on the width of the spine). With soft or hard covers, this binder will bind them all and do it stronger and more effectively than any comparable manual binding system on the market. If you need to remove, replace or add sheets, simply re-heat the binding.

With the wide range of Bindomatic® covers, your business presentations, reports, proposals, statements, manuals etc., will always look and feel as professional as the content and message of your document.

Bindomatic® 7000 Presentation Binding System

The Bindomatic® 7000 was the world's first automated, desktop thermal binder when launched, and is still the undisputed champion of its class. The capacity remains unrivalled with 20 documents bound per minute. Thanks to its intuitive simplicity and ease of use, the Bindomatic® 7000 is the ideal binding solution for office/corporate walk-up print stations, as well as volume demanding CRD or commercial print environments. It will always deliver a professional impression in the blink of an eye, without the need of trained operators.

Available with a large range of covers, including hardback and special orders.



Key Product Features

Document format:	A5 to A3 landscape
Document spine Width:	1,5 to 54mm
Capacity:	Up to 540 sheets of 80gsm paper.
Electrical requirements:	230V, 50/60Hz, 700W, 3.2 A (max)
Product weight:	5.5kgs
Dimensions:	L 446 x W 264 x H 132mm



Key Product Features

Document format:	A4 - portrait
Document spine widths:	1.5mm - 15mm
Capacity:	From 1 to 150 sheets of 80gsm paper
Electrical requirements:	230V, 50/60Hz
Dimensions:	L 511 x W 475 x H 360mm
Product Weight:	28 kg



Bindomatic® 9000

The introduction of Bindomatic® 9000 sets a completely new market standard for document binding! The capacity to process and bind a document every two seconds is astonishing, but what truly sets it apart from all others is its superior work flow efficiency. Up to 60 documents can be loaded into the machine at one time, allowing you to work in parallel while simultaneously binding your documents, bind up to 30 documents per minute (depending on spine width).

Thanks to its intuitive simplicity, ease of use and unrivalled binding speed, the new Bindomatic® 9000 is the ideal binding solution for volume-demanding print room environments as well as larger office/corporate walk-up print stations.

Key Product Features

Document format:	A4 – portrait
Document spine width:	From 1.5 to 15 mm
Capacity:	From 1 to 150 sheets of 80gsm paper.
Electrical requirements:	240v 50/60hz
Dimensions:	L 746 x W 645 x H 435 mm
Product weight:	48kg



Valiani Mat Pro Ultra flat bed cutting tables.

The Valiani Mat Pro Ultra range has a working area up to 1515 x 1051mm. A key feature is the patented tool change mechanism, tools can be changed in less than 30 seconds, moving from cutting to creasing, perforating, embossing, plotting, writing and drawing. All the models are available in a vacuum version for more demanding applications.

This machine minimises waste and is suitable for a variety of applications including frame mountboard cutting, boxes and displays, contour cutting, embossing, stickers and making prototypes and mock ups, cutting up to 5mm.

Standard configuration

Cutting machine, base, one cutting tool, V-Studio, camera and vacuum pump.

Ideal for:

- Frame mountboard cutting
- Boxes and displays
- Contour cutting
- Embossing and drawing
- Stickers and gaskets
- Prototyping and mock-up



Optima V

The Optima V, with a combined vacuum assisted table and a new fold-away clamping system, provides incomparable working flexibility over a wide range of materials and unparalleled accuracies to meet today's production challenges.

Suitable for paper patterns, prototypes and samples on fabric, leather and technical materials cutting plotter for apparel, shoes and leather goods industries. This machine cuts up to 20mm



Mat Pro® Ultra V80

Working area:	815mm x 610mm
Width:	1100mm
Depth:	1020mm
Height:	850mm
Weight:	93kg
Max Speed:	365mm/sec

Mat Pro® Ultra V120

Working area:	1215mm x 815mm
Width:	1700mm
Depth:	1200mm
Height:	850mm
Weight:	135kg
Max Speed:	365mm/sec

Mat Pro® Ultra V150

Working area:	1515mm x 1051mm
Width:	2010mm
Depth:	1400mm
Height:	1100mm
Weight:	182kg
Max Speed:	365mm /sec

Optima V 80

Cutting Area:	1230 x 800 mm
Height:	1200mm
Width:	1830mm
Depth:	1430mm
Weight:	145 kg

Optima V 160

Cutting Area:	1230 x 1600 mm
Height:	1200mm
Width:	1830mm
Depth:	2230mm
Weight:	190 kg.

Optima V 250

Working area:	1230mm x 2520mm
Width:	1830mm
Depth:	3010mm
Height:	1200mm
Weight:	290 kg

Power

Main Supply:	SP / 110V60Hz/10S, 220V/50Hz/10A
Pneumatics:	6 Bar/90 PSI
Connectivity:	USB

Shredders

Shredders

Morgana offer the full range of EBA shredders right from entry level personal shredders, desk side shredders, departmental shredders through to heavy duty industrial shredders. These high quality German engineered units offer the highest levels of security and unparalleled reliability in a range of ergonomically designed units. As well as high security paper shredding, many of the units in the range can also shred CD/DVDs offering the ability to securely destroy these in house. Below are the most common models, however the full range can be viewed on our website or in the Shredder brochure.



EBA 2331



EBA 5131



EBA 5141

The new DIN 66399 standard for the destruction of data defines three protection classes, six material categories and seven security levels. Your data has to be classified and assigned to one of the three protection classes (internal, confidential, very confidential or secret data).

The determined protection class defines the security levels appropriate for your classified data. Most important for document shredders is the material category "P" with the security levels P-1 to P-7 for information in original size, for example on paper, films or printing plates.

Key Product Features

Model	2331 S	2331 SC	2331 C
Feed opening, mm:	310	310	310
Shredder type:	strip cut	cross cut	fine cut
Shred width:	4	4 x 40	2 x 15
Speed, A4 paper 70 g/m:	30-32	25-27	15-17
Speed, A4 paper 80 g/m:	26-28	21-23	13-15
Security level:	P-2	P-4	P-5
Volume of cabinet:	140 ltrs	140 ltrs	140 ltrs
Dimensions:	H 930 x W 538 x D 470		
Weight:	52kg		

Model	5131 C	5131 CC	5131 CCC
Feed opening, mm:	310	310	310
Shredder type:	cross cut	cross cut	fine cut
Shred width:	4 x 40	2 x 15	0.8 x 5
Speed, A4 paper 70 g/m:	40-45	25-30	11-12
Speed, A4 paper 80 g/m:	34-39	21-26	9-10
Security level:	P-4	P-5	P-7
Volume of cabinet:	180 ltrs	180 ltrs	180 ltrs
Dimensions:	H 1020 x W 548 x D 590		
Weight:	102kg		

Model	5141 C	5141 C	5141 CC	5141 CCC
Feed opening, mm:	405	405	405	405
Shredder type:	cross cut	cross cut	fine cut	fine cut
Shred width:	4 x 40	2 x 15	0.8 x 12	0.8 x 5
Speed, A4 paper 70 g/m:	40-45	25-30	15-17	10-11
Speed, A4 paper 80 g/m:	34-39	21-26	13-15	8-9
Volume of cabinet:	210 ltrs	210 ltrs	210 ltrs	210 ltrs
Security level:	P-4	P-5	P-6	P-7
Dimensions:	H 1010 x W 640 x D 590			
Weight:	115kg			

High Capacity Shredders

This innovative heavy-duty shredders with conveyor belt provides an impressive shred capacity of up to 700 sheets at a time (EBA 7050-2 C).

Complete lever-arch files can be destroyed within seconds. Automatic reverse and re-feeding in case of paper jam. Automatic stop when shred bag is full and in case of a paper jam. Shred trolley on swivel castors with holding frame for disposable plastic bag (300 litres capacity).

Key Product Features

Model	5146 C	5146 C
Feed opening, mm:	460	460
Shredder type:	cross cut	cross cut
Shred width:	4 x 60	2 x 15
Speed, A4 paper 70 g/m:	65-70	35-40
Speed, A4 paper 80 g/m:	55-60	29-34
Security level:	P-3	P-5
Dimensions:	H 1700 x W 740 x D 765	
Weight:	256kg	
Shred collection in:	Mobile shred bin	

Model	6040 S	6040 C
Feed opening, mm:	410	410
Shredder type:	strip cut	cross cut
Shred width:	6	6 x 50
Speed, A4 paper 70 g/m:	90-110	80-90
Speed, A4 paper 80 g/m:	75-95	68-78
Security level:	P-2	P-3
Dimensions:	H 1440 x W 1240/690* x D 1700	
Weight:	350kg	
Shred collection in:	Disposable plastic bag, pull-out on wheels	

*Transportation width (without sidetables)

Model	7050-2 C	7050-3 C
Feed opening, mm:	500	500
Shredder type:	cross cut	cross cut
Shred width:	8 x 40-80	6 x 50
Speed, A4 paper 70 g/m:	600-700	300-400
Speed, A4 paper 80 g/m:	500-600	250-350
Security level:	P-2	P-3
Dimensions:	H 1714 x W 1036 x D 2170/3070*	
Weight:	52kg	
Shred collection in:	Shred trolley	

*Depth including conveyor belt system

EBA Paperbox

The mobile collecting box is an intermediate storage container for unwanted files and documents. It is one element of an in-house solution for efficient document security when used in conjunction with centralised high-capacity shredders.

- Lockable lid with removable key
- Slot for safe disposal of documents
- High storage volume of 125 litres
- Practical handle for easy transportation
- Smooth running, lockable wheels
- Storage space for outdated files or full waste paper baskets



EBA 5146



EBA 6040



EBA 7050

Mail Inserter Systems

Mid-range Inserting System - Reflex

A mid range inserting system with a simple and intuitive operation system. Its easy automated job change-over makes it suitable for the widest range of applications.

A unique solution for

- Short run jobs
- Automation of manual inserting
- Reprints processing
- Fast turn-around times

Key Product Features

Inserter

Inserter	Min	Max
Cycles Speed:		4,000 Hr
Envelope size:	S65/DL	B4
Envelope (HxW):	105 x 225	353 x 353
Document (HxW):	93 x 210	300 x 315
Insert Thicknesses:	60gsm	12mm

Tower Feeder

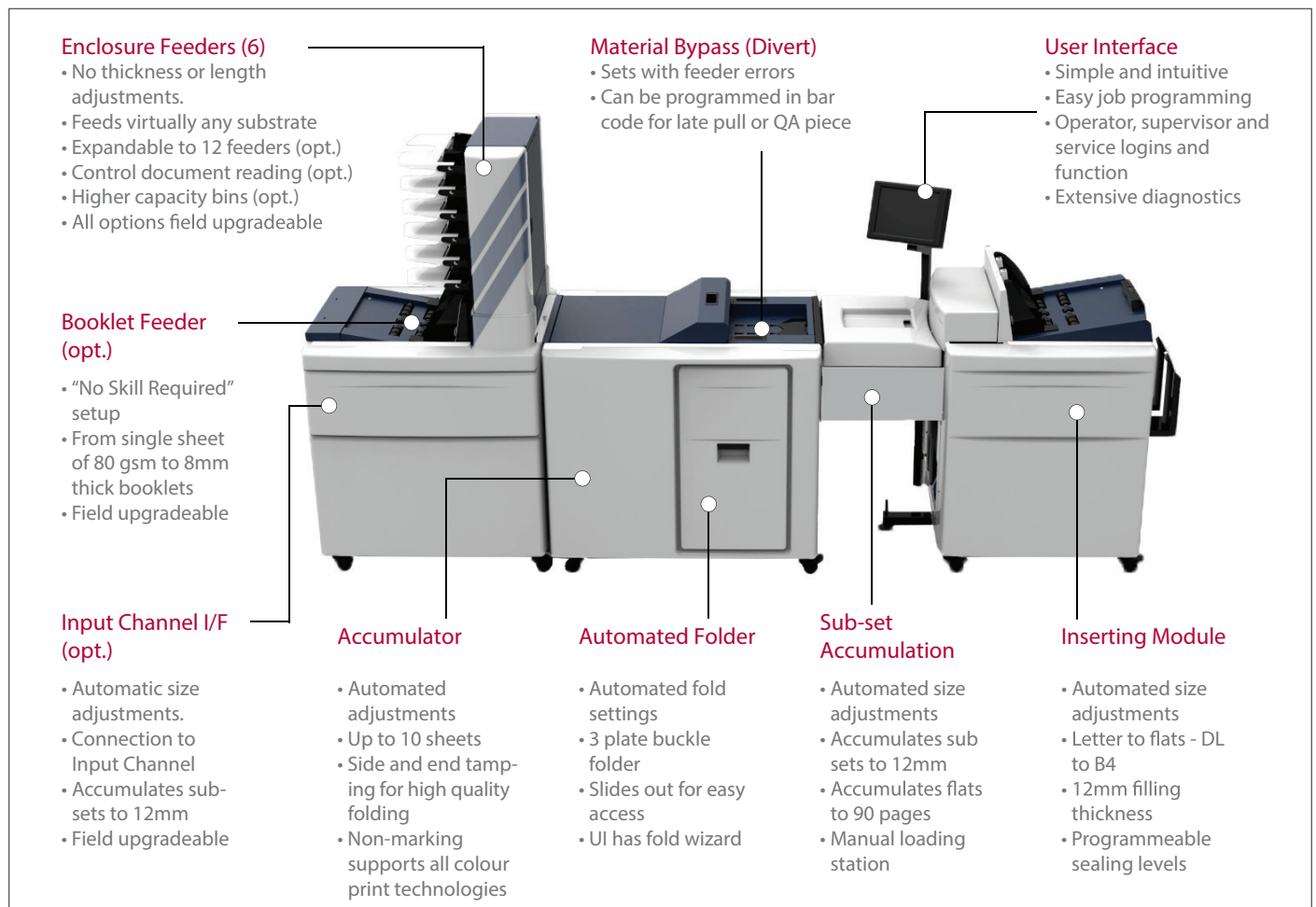
Tower Feeder	Min	Max
Feeders per tower:	3* (High Cap Binds)	6 (std. bins)
Towers per system:	1	2
Stack Height:	28mm (std. bin)	70mm (Hi cap bins)
Sheet size (HxW):	93 x 210	300 x 315
Paper Weight:	60gsm	200gsm
Booklet Feeder (opt):	80gsm	8mm

Accumulator/Folder

Accumulator/Folder	Min	Max
Sheet size:	210 x 270	300 x 300
Fold Capacity:		7pg. - "C", "Z"
		10pg. half

Optional Modules

Control reader / OMR, 1D & 2D
 High capacity feed bin / 700 page capacity
 180cm shingling output conveyor
 Output reading / sequence verification
 ADF Integration



This image shows a full-page view of a notebook or worksheet. At the top, there is a solid red horizontal bar. Inside this bar, on the left side, the word "Notes" is written in a white, sans-serif font. The rest of the page is white and filled with thin, light gray horizontal lines, providing space for writing. In the bottom-left corner, there is a small red square containing the number "38" in white.

Notes

38



www.morgana.co.uk

www.morgana.co.uk

Morgana Systems Limited • United Kingdom • Telephone: +44 (0)1908 608888 • www.morgana.co.uk • email: info@morgana.co.uk